

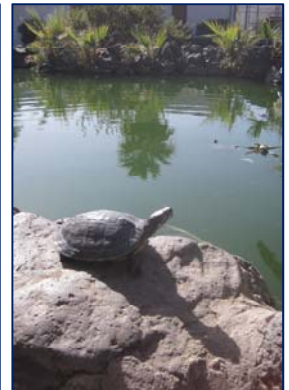
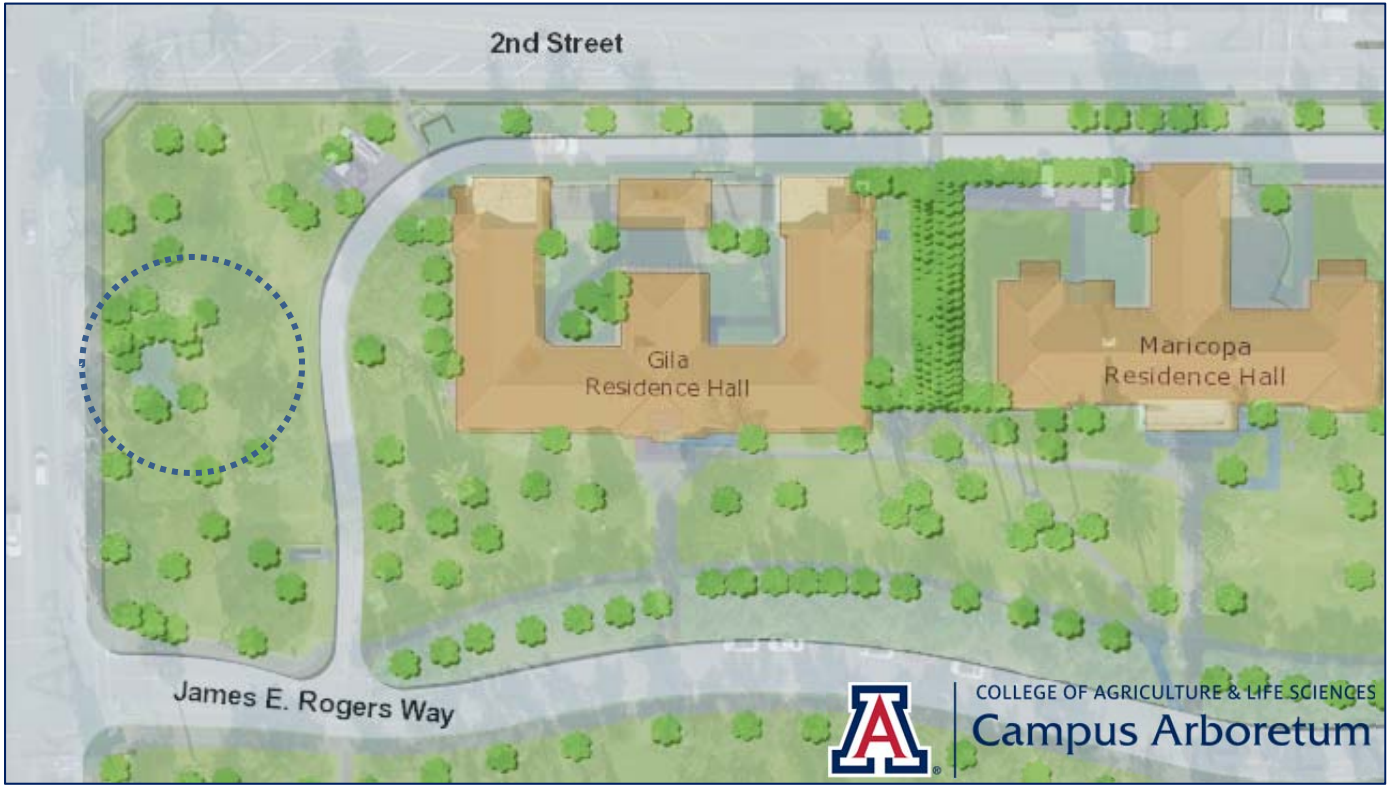


COLLEGE OF AGRICULTURE & LIFE SCIENCES  
**Campus Arboretum**



Concept Sketch and Proposal: President's Pond

**University of Arizona Campus Arboretum**



Location Map and Existing Features: President's Pond

University of Arizona Campus Arboretum

# Historical Significance: President's Pond

## University of Arizona Campus Arboretum

**A retreat from urban life on the edge of campus:** On the corner of Park Avenue and 2<sup>nd</sup> Street, hidden in plain sight is the "Turtle Pond", considered a campus treasure both for its charm and history. Also known as the "President's Pond", the water feature and surrounding garden area are believed to have been on the property of the University President's Queen Anne style home until it was removed for the construction of Gila Hall. The pond has historically been planted with palms and other lush-looking species to give the impression of an oasis. Turtles and blue herons have frequented the pond as have many students, faculty, staff, and community neighbors seeking a quiet spot for rejuvenation.

At the University of Arizona, the landscape of the Historic Core is defined and distinguished by an eclectic collection of elements and plant materials. The collection reflects expression of aesthetic, cultural and functional influences of specific time periods and a context of experimentation as the campus has always served as an outdoor laboratory supporting the university's land grant mission. In the time period of its construction, lily ponds were a hallmark of Victorian gardens who sought to replicate the appeal of displays like that created by the giant *Victoria regia* lily displayed in an English glass house by Joseph Paxton. The UA lily pond was constructed during a time period when landscape features were growing in popularity and becoming commonplace during the native plant fashion of late 1800s. As such, our university's pond represents a history of global cultural sensitivity, and ongoing innovation, while also preserving welcome, open greenspace in a busy urban setting.

The University of Arizona is committed to the preservation and stewardship of historical, archaeological, cultural, and architectural resources on its main campus and other properties throughout Arizona. As a result of this commitment, the 33-acre Campus Historic District was created in 1986, recognizing the significance of the campus historic core. The district is listed on the National Register of Historic Places and showcases buildings and landscapes dating from 1891 through 1937. The verdant landscapes of the Historic District have been a favorite place for generations of students, staff, and the Tucson community. Features within the landscape, such as the lava rock wall, the Main Gate, and the fish pond are all part of the historic fabric. Within the District and throughout the campus, the Campus Arboretum showcases a world-class collection of desert-adapted plants including a number of Heritage Trees and Great Trees of Arizona.

With funding from the Getty Foundation Campus Heritage Grant Program, Architectural Resources Group (ARG) was retained to complete a Historic Preservation Plan for the University of Arizona in 2005. The plan establishes the framework for preserving historic and cultural campus resources. This document is based on the outline for a historic preservation plan developed by the National Trust for Historic Preservation and the American Planning Association in *Preparing a Historic Preservation Plan* (1994) by Bradford White and Richard Roddewig. The purpose of the University of Arizona Preservation Plan is to promote historic preservation efforts, inventory campus historic resources, maintain and enhance the historic campus character through the creation of guidelines in keeping with the vision of the Comprehensive Campus Plan.



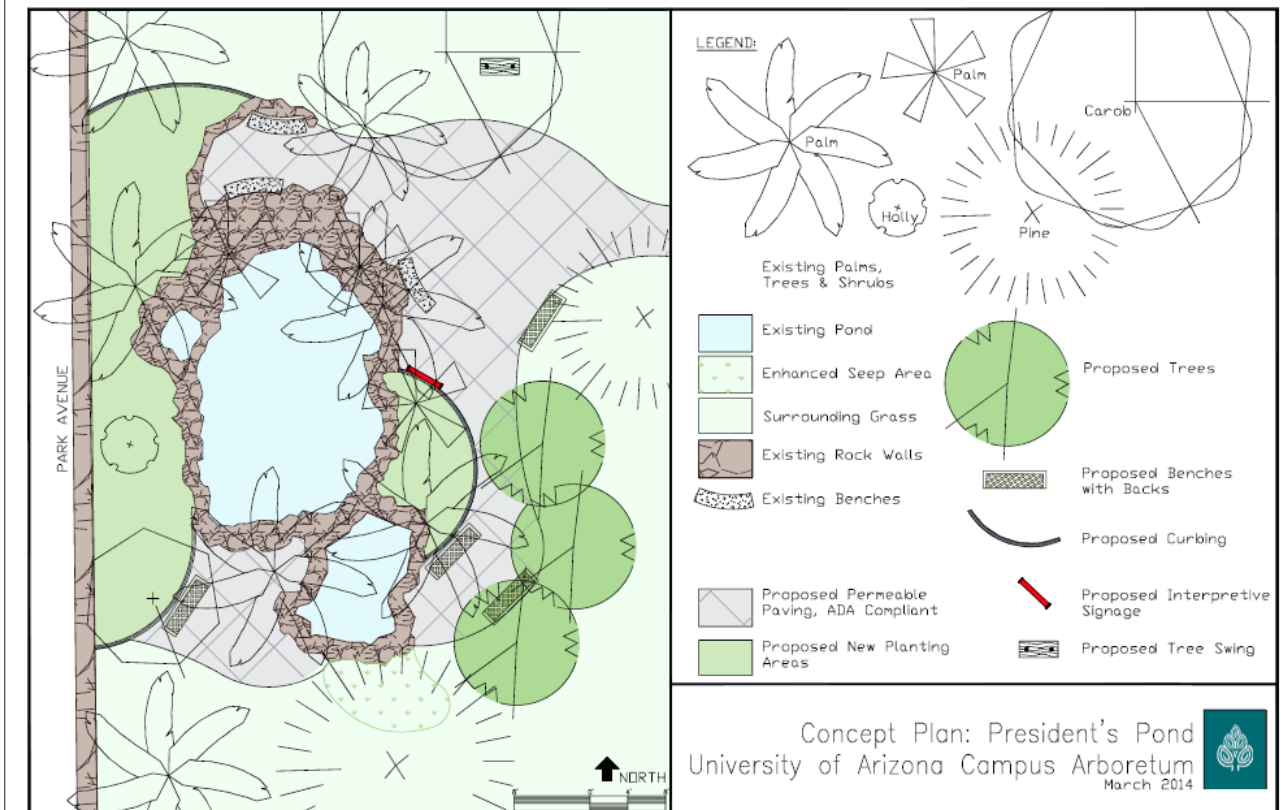
The University's Comprehensive Campus Plan calls for enhanced gardens, lawns, courtyards and placing groves of trees for shading, cooling and outdoor comfort and notes that deciduous trees provide seasonally appropriate shade and sun. The Plan notes the benefits of green spaces as visually pleasing places to collect water and provide cooling. The Plan acknowledges the importance of the Campus Arboretum in determining plant palette and material choices and calls for botanical and common name labels for both typical and unusual plants. Realization of these worthy goals requires significant investment. Historic landscapes are not static and they require a good deal of management to maintain vigor, and extend longevity. For this reason, The Maintenance Manual for Historic Landscapes was created as an appendix to the Preservation Plan to address issues related to the historic landscape and to further the goals outlined in the Campus Comprehensive Plan.

The UA Campus Arboretum, in partnership with UA Facilities Management have responded to Preservation Plan recommendations to invest in additional grounds staff and training in order to safeguard historic landscapes. However, there is no fund dedicated for the needed improvements described in the Maintenance Manual For Historic Landscapes. For example, the maintenance manual recommends improved seating, preferably seating compatible with the district character, extended plantings of appropriate plantings around the pond's perimeter, and additional shade on the west side of the pond, however, implementation is delayed due to funding constraints. Given these needs, the UA Campus Arboretum, with seed money supplied by the Tucson Patio Garden Club to draft a concept plan, is seeking sponsors to implement the proposal and revitalize this historic campus site.

To share your ideas for enhancing the President's Pond, or to support our fundraising campaign, please contact the UA Campus Arboretum Director, Dr. Tanya Quist at (520)621-7074 or [infoarboretum@ag.arizona.edu](mailto:infoarboretum@ag.arizona.edu). To donate securely online, visit: <http://arboretum.arizona.edu/membership>

# Concept Sketch Plan: President's Pond

## University of Arizona Campus Arboretum



**Key improvements proposed for the President's Pond.** All mature, woody vegetation will be retained while aggressive aquatic vegetation will be thinned. New inorganic ground covering, complemented with additional curbing and seating areas will be added to direct traffic and define gathering areas, thus, facilitating visitors' access to and enjoyment of the garden. Additional plants will be installed to shade seating areas and buffer street view, noise and light from the western side of the pond, adjacent to Park Ave. A wooden swing is proposed with an inscription for use under the majestic limbs of the female carob tree near the pond (see concept immediately below).



# Considerations: President's Pond Improvements

## University of Arizona Campus Arboretum

1. Coordinate all design development and improvements with Facilities staff and Historic Preservation specialists at the College of Architecture, Planning, and Landscape Architecture and/or the Arizona State Museum, respecting the National Register status under the NPS Historic American Landscapes (HALS) program.
2. Hardscape changes, additions, site furniture:
  - a. Avoid or minimize impact to pond structure (rock sides, bottom). Remove short sections of rock at north near benches, to eliminate tripping hazard.
  - b. Add edging to distinguish areas of decomposed granite and lawn areas.
  - c. Add curbing to create 2 new planting areas on both east and west sides of pond.
  - d. Retain existing 3 concrete benches.
  - e. Add 4 new donor benches.
  - f. Add kiosk/interpretive signage
3. Vegetation:
  - a. Retain and protect all trees and shrubs.
  - b. Thin existing overgrown areas of umbrella plant (*Cyperus alternifolia*) and fan palm volunteers (*Washingtonia filifera*) to the extent possible, without damaging rock sides of pond.
  - c. Add new native, non-invasive, emergent/wetland plants (consider rush (*Eleocharis*), sedge (*Carex*), water plantain (*Alisma*), duckweed (*Lemna* and/or other appropriate species.)
  - d. Add native plants to the new planting areas adjacent to the pond (consider yucca (*Yucca*), beargrass (*Nolina*), arrowhead (*Sagittaria*), canyon ragweed (*Ambrosia ambrosiodes*), clematis vine, milkweed, oreganillo (*Aloysia wrightii*), sacaton grass.....etc.)
4. Pond Ecosystem:
  - a. Pond is drained regularly due to high content of algae and nitrogen levels. This is a result, in part, by the current turtle population.
  - b. Consider removing all but <6 turtles (currently there are +/-50 or more); coordinate with local groups who could be recipients.
  - c. Consider refurbishing the pond by draining, power-washing, refilling, and establishing an aquatic ecosystem for native species only (e.g., native topminnow fish, native turtles, and frog/toad species) This may require a pump and filter system.
5. Utilities:
  - a. Protect existing water lines, gas line, electric box, irrigation gate valve, and irrigation quick coupler.
  - b. Consider adding an automatic valve system for keeping the pond at a given level. Currently pond is filled manually by Facilities personnel.