



COLLEGE OF AGRICULTURE
& LIFE SCIENCES
COOPERATIVE EXTENSION

Tree Care Workshop

Tanya M. Quist, PhD

Transplanting and Establishment Best Practices

What is your experience planting trees?

- Have you observed trees planted that didn't thrive in the first few years?
- Did you feel confident that there was clear reasons for failure?
- What are some of the reasons you think trees fail?

Planting Trees For Life

1. Assess Conditions
2. Obtain the Tree
3. Prepare the Site
4. Finish Up

Steps for proper planting

1. Assess the Site

Soil, water, microclimate, space available.



- Test soil for texture (sand, silt, clay) and chemical properties (salinity, pH, nutrition)
- Test for adequate drainage.

Steps for proper planting

1. Assess the Site

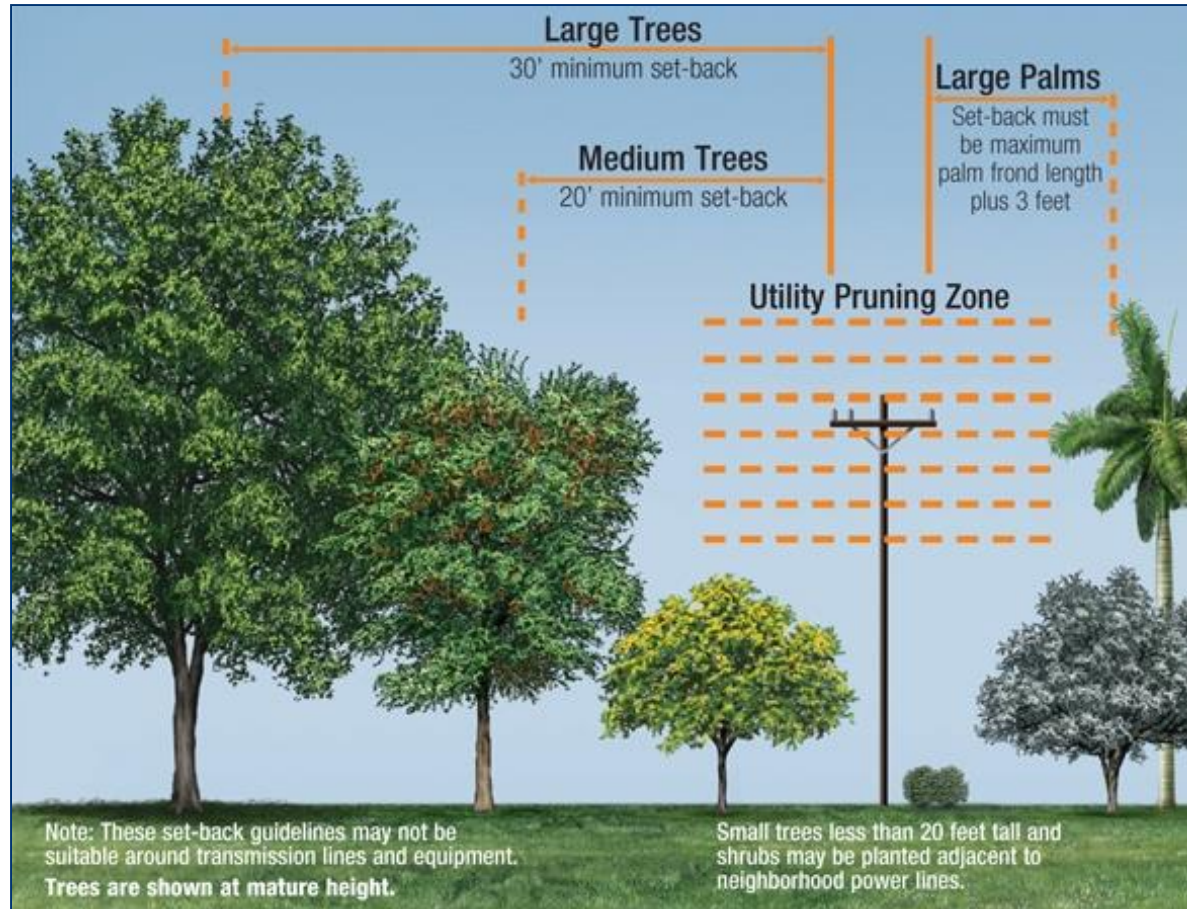
Soil, water, microclimate, space available.



Exotic and native plants can each find a home in a landscape when customized to the site conditions and microclimates.

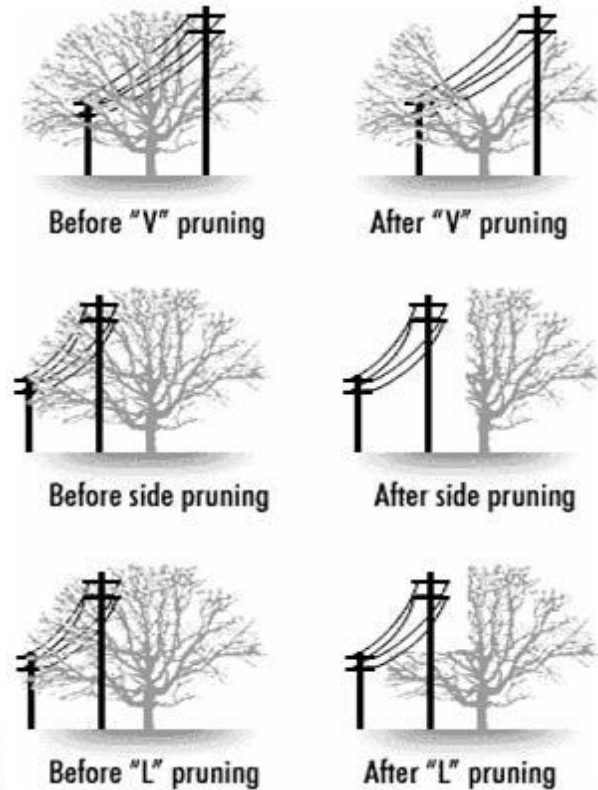
Steps for proper planting

1. Assess the Site Space



http://www.fpl.com/residential/trees/images/tree_setback.jpg

Planning For Space Improves Safety, Efficiency and Longevity



Steps for proper planting

2. Obtain the Tree

Species selection

Match to site conditions



The right plant placed in the right place improves plant health and reduces maintenance.

Steps for proper planting

2. Obtain the Tree

Plant Condition –

Defects above and below the soil

1. Branch structure
2. Root Girdling
3. Disease



© Guy LeBlanc



Steps for proper planting



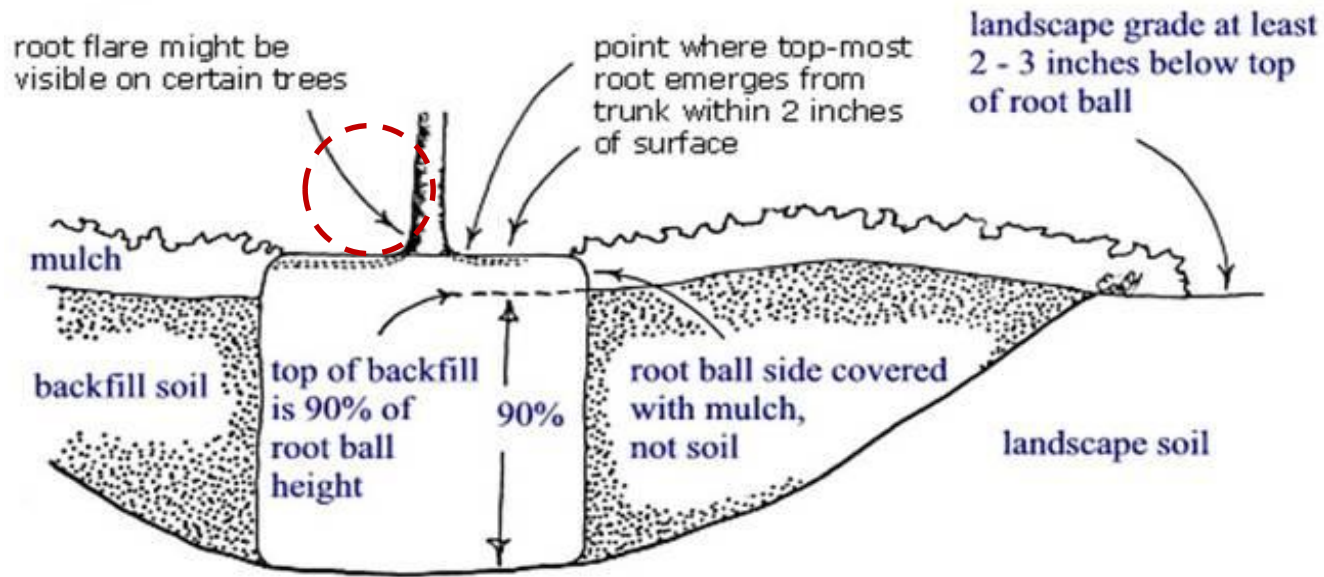
Protect the root ball and canopy.

Lift the tree with straps or rope around the root ball, not by the trunk.

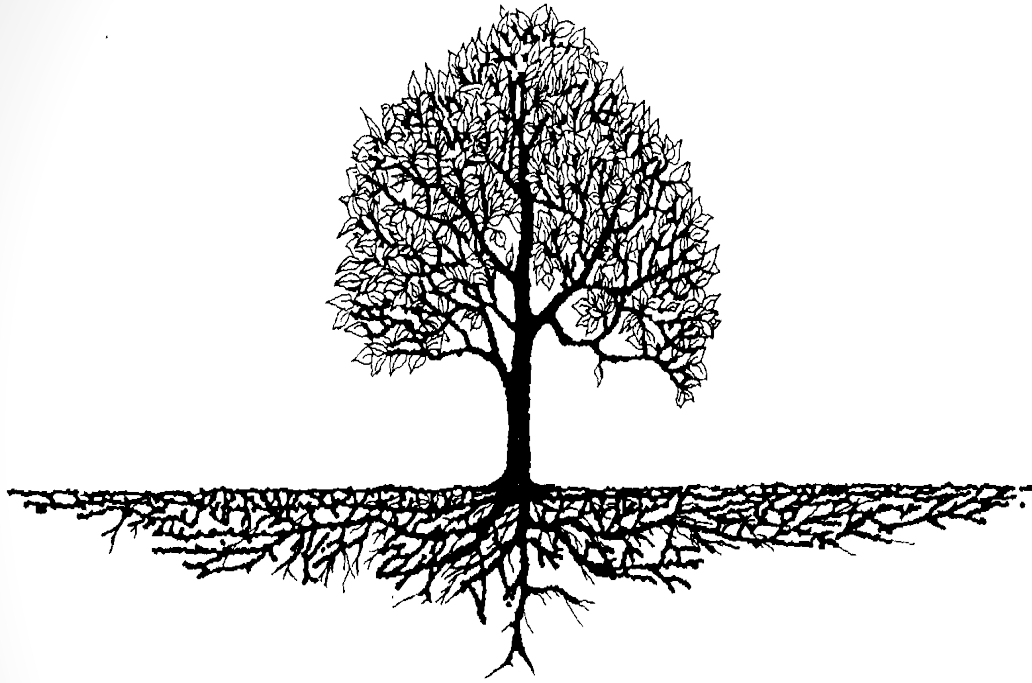
Steps for proper planting

3. Prepare the Site - The planting pit

1. Shallow, wide, rough sloping walls
2. Undisturbed base
3. Top of root ball proud
4. Native backfill
5. Water in
6. Mulch



Steps for proper planting



Steps for proper planting

Benefits of Organic Mulch

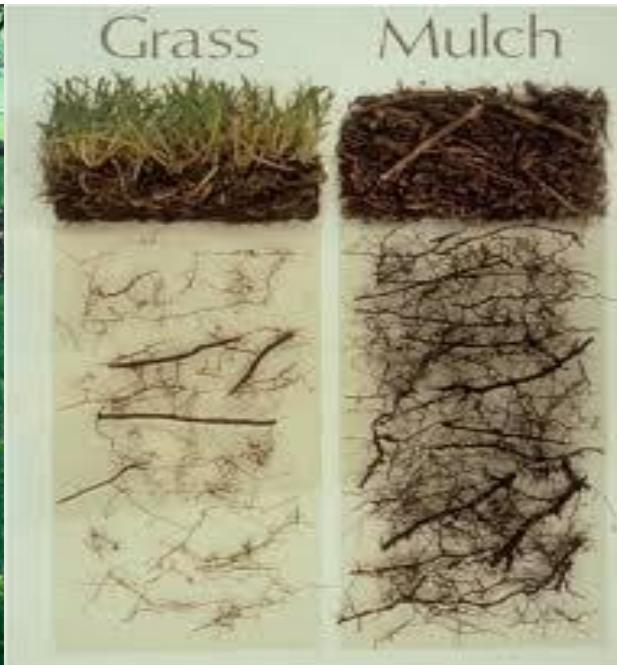
- ✓ Reduces evaporation
- ✓ Reduces weed growth
- ✓ Insulates soil surface
- ✓ Recycles nutrients
- ✓ Produces humus
- ✓ Promotes root growth
- ✓ Promotes trunk growth



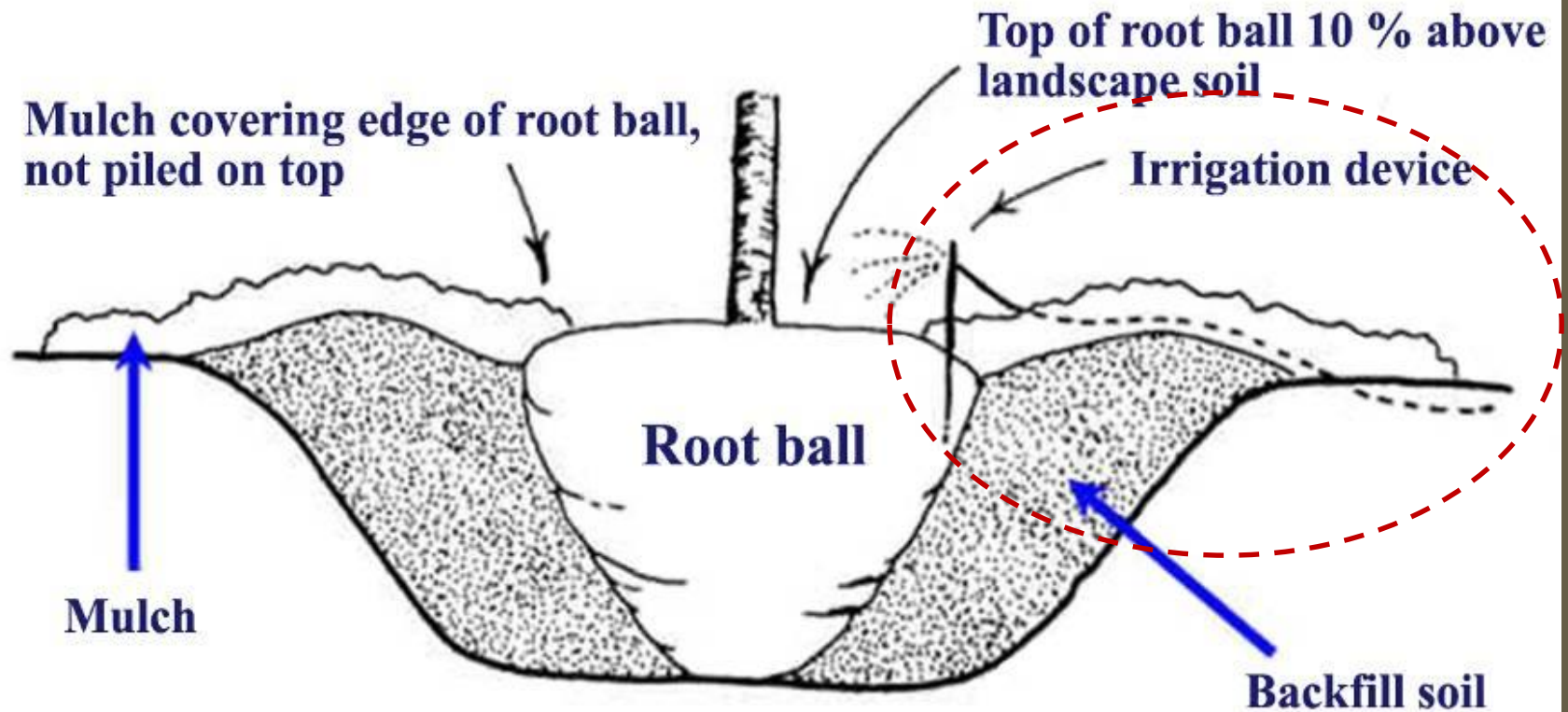
Steps for proper planting

Applying Mulch

- ✓ Apply 3-6" deep
- ✓ Extend beyond the dripline
- ✓ Avoid the trunk



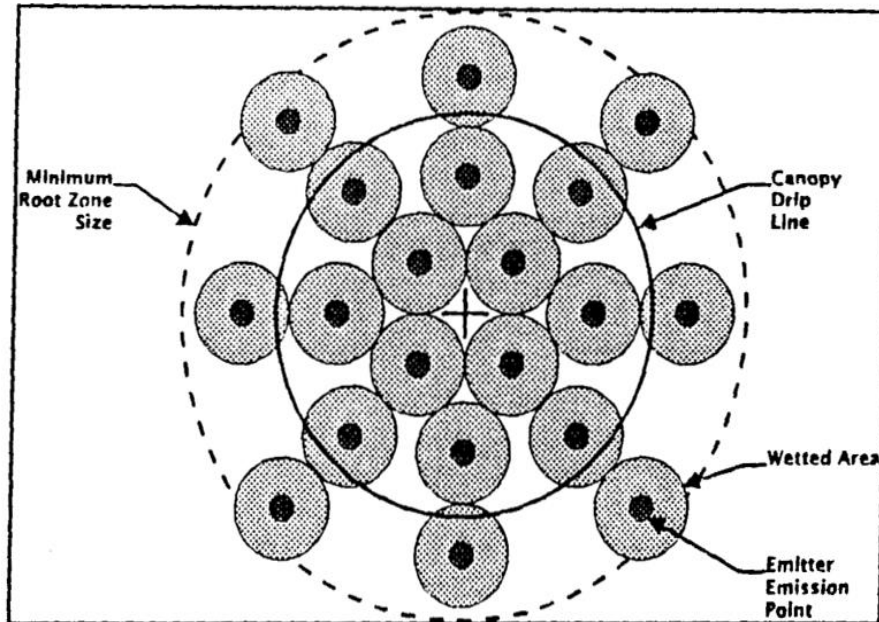
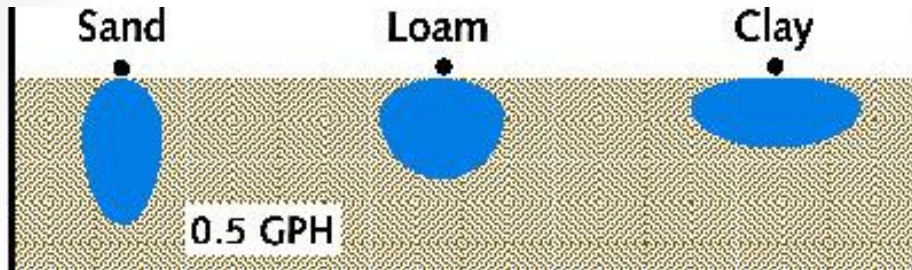
Summary of proper planting



<http://treesandhurricanes.ifas.ufl.edu>

Fo
on re

Irrigation Setup



- Emitter spacing and irrigation frequency varies by soil type
- 1 emitter = 5'dia wet in clay soil
- Create a maintenance plan that schedules irrigation adjustments

Watering Schedule for New Plants

Establishing Fall Planted Trees

Weeks After Planting

1

2

3

4

5

6

7

8

Irrigation Interval

3-4 d

6-7 d

7-10 d

10-14 d

After 8 weeks, gradually extend the interval until the plant is established.

Season

Summer

Fall

Winter

Spring

Irrigation Interval

7-21 d

14-30 d

30-60 d

14-30 d

Desert Adapted

7-10 d

7-12 d

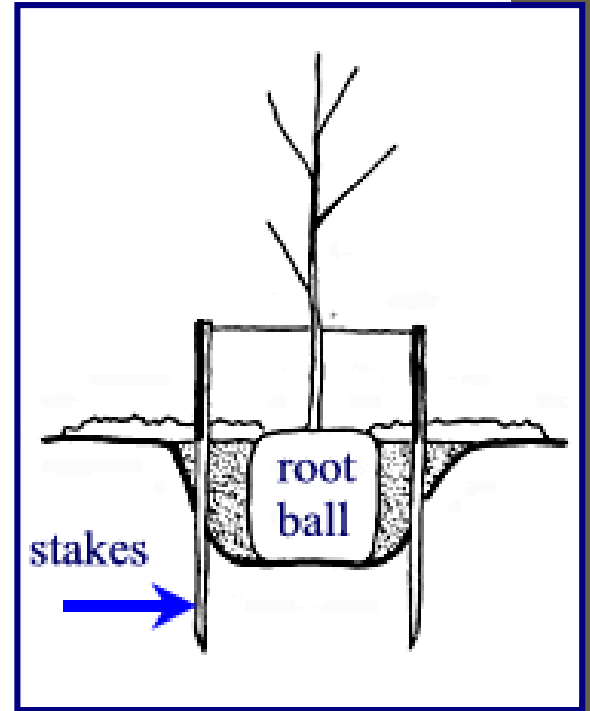
14-30 d

7-12 d

High Water Use

4. Finish Up

Traditional staking methods



Stakes should be removed within one year of planting.

4. Finish Up Pruning



Remove broken branches.

Perform structural pruning if needed (remove codominant leaders).

Do not prune to compensate for root loss.



COLLEGE OF AGRICULTURE
& LIFE SCIENCES
COOPERATIVE EXTENSION

Questions?

Tanya M. Quist, PhD

Transplanting and Establishment Best Practices