

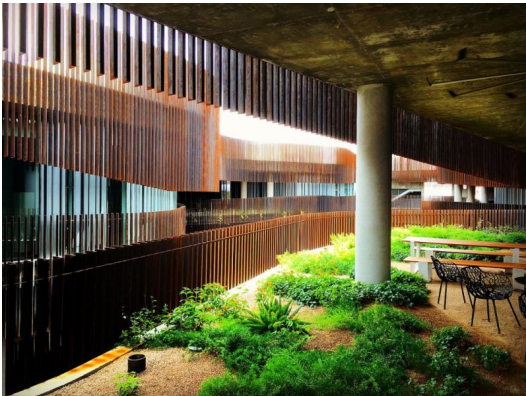


Tree of the Month

Dichrostachys cinerea

Sickle Pod

Native to West Africa, this shrubby tree is considered to be a weed in many areas around the world. However, here in our harsh environment, it acts as an exotic, decorative tree. It is cold hardy, drought tolerant, fire resistant, fast growing, and has some of the strangest flowers on campus. As a member of the Fabaceae family, it improves nitrogen concentrations in the soil. In the wild, it is most often bat pollinated, but can also be pollinated by insects. This tree only grows 6-10 ft tall. It has feathery, bi-pinnate leaves and notable thorns. It also has a wide range of medicinal uses, from curing stomach ulcers to a snake venom antidote. If you'd like to see it on campus, check the southeast corner of Social Sciences.



MEET THE TEAM

Ryan Valdez is an undergraduate student pursuing two degrees in Plant Sciences and Science Literacy, Learning, and Leadership while also working on a minor in Ecology and Evolutionary Biology. Ryan's project this semester will produce a mobile tour highlighting the role of microclimates in selecting plants for urban spaces. Watch for updates on Ryan's project on the [Mobile Tour Pages](#).

Learn more about our latest projects



GET INVOLVED

Trees are the foundation of any resilient ecosystem and central to sustainable cities. To this end, The University of Arizona Campus Arboretum is committed to providing education and leadership promoting urban tree conservation and stewardship. Explore our online resources, community partnerships and information on campus and statewide [Outreach Programs](#).

Learn about volunteer opportunities

CAMPUS ARBORETUM TOURS

Experiencing the campus landscape will change the way you think about urban deserts. Visit campus to explore on your own or participate in a guided tour.

To view the
[Schedule of Tours](#)
[in March, click here.](#)



UNIVERSITY OF ARIZONA CAMPUS ARBORETUM

P.O. Box 210036 Tucson, AZ 85721-0036

PHONE: (520) 621-1582

E-MAIL: infoarboretum@ag.arizona.edu

WEBSITE: <http://arboretum.arizona.edu>

